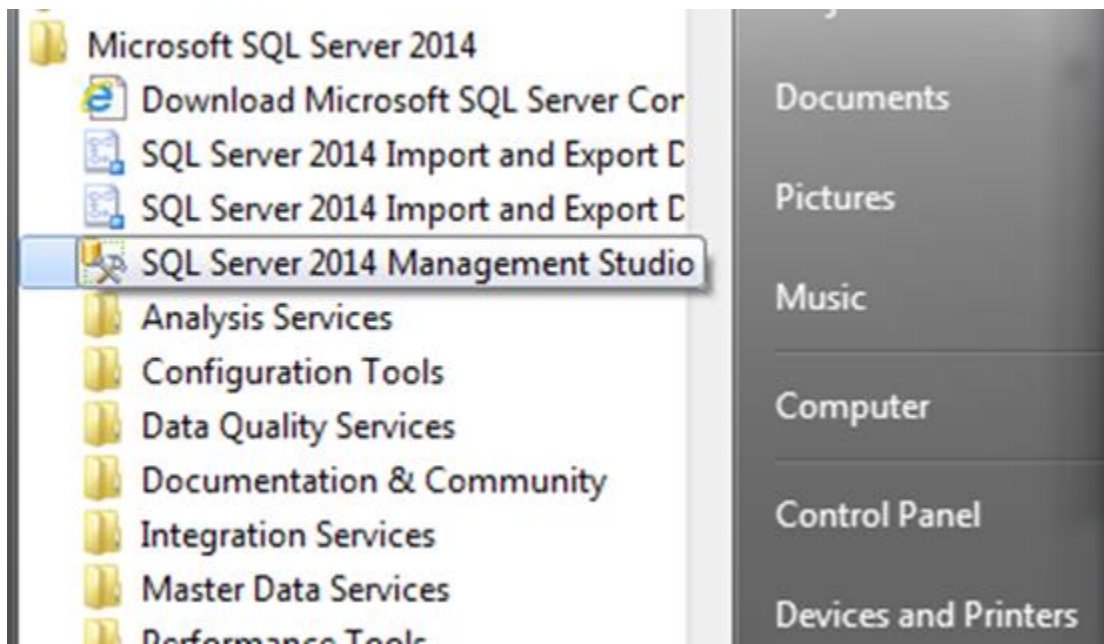


Step by Step Guide to Reading the Data

Run your computer as an administrator. Turn off your computer and turn it back on as an administrator.

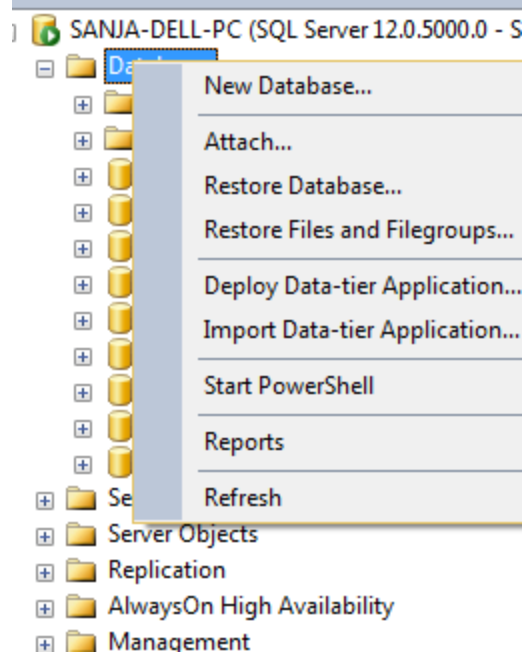
Unzip the Data.zip file. Unzip every DxAge_1 to DxAge_4 files. You must unzip the .csv files as well. The best place to unzip the files is My documents or Desktop.

Go to All Programs, right click on MS SQL Studio Manager (SSMS):



Log in to the server, use default settings.

Click on the Database, and New Database




Enter new database name (for example HAP 752):

New Database

Select a page

- General
- Options
- Filegroups

Script Help

Database name 

Owner: <default>

Use full-text indexing

Database files:

Logical Name	File Type	Filegroup	Initial Size (MB)	Autogrowth / Maxsize
	ROWS...	PRIMARY	4	By 1 MB, Unlimited
_log	LOG	Not Applicable	1	By 10 percent, Unlimited

Connection

Server: SANJA-DELL-PC

Connection: Sanja-DELL-PC\Sanja

[View connection properties](#)

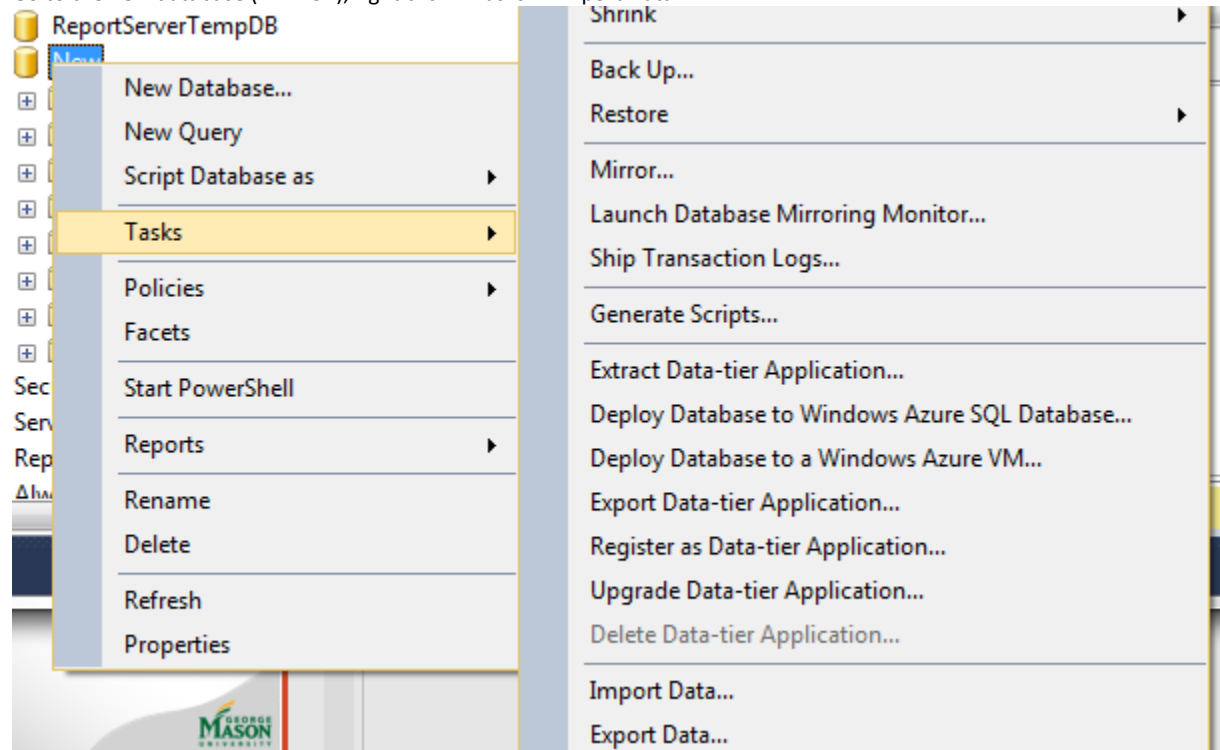
Progress

Ready

Add Remove

OK Cancel

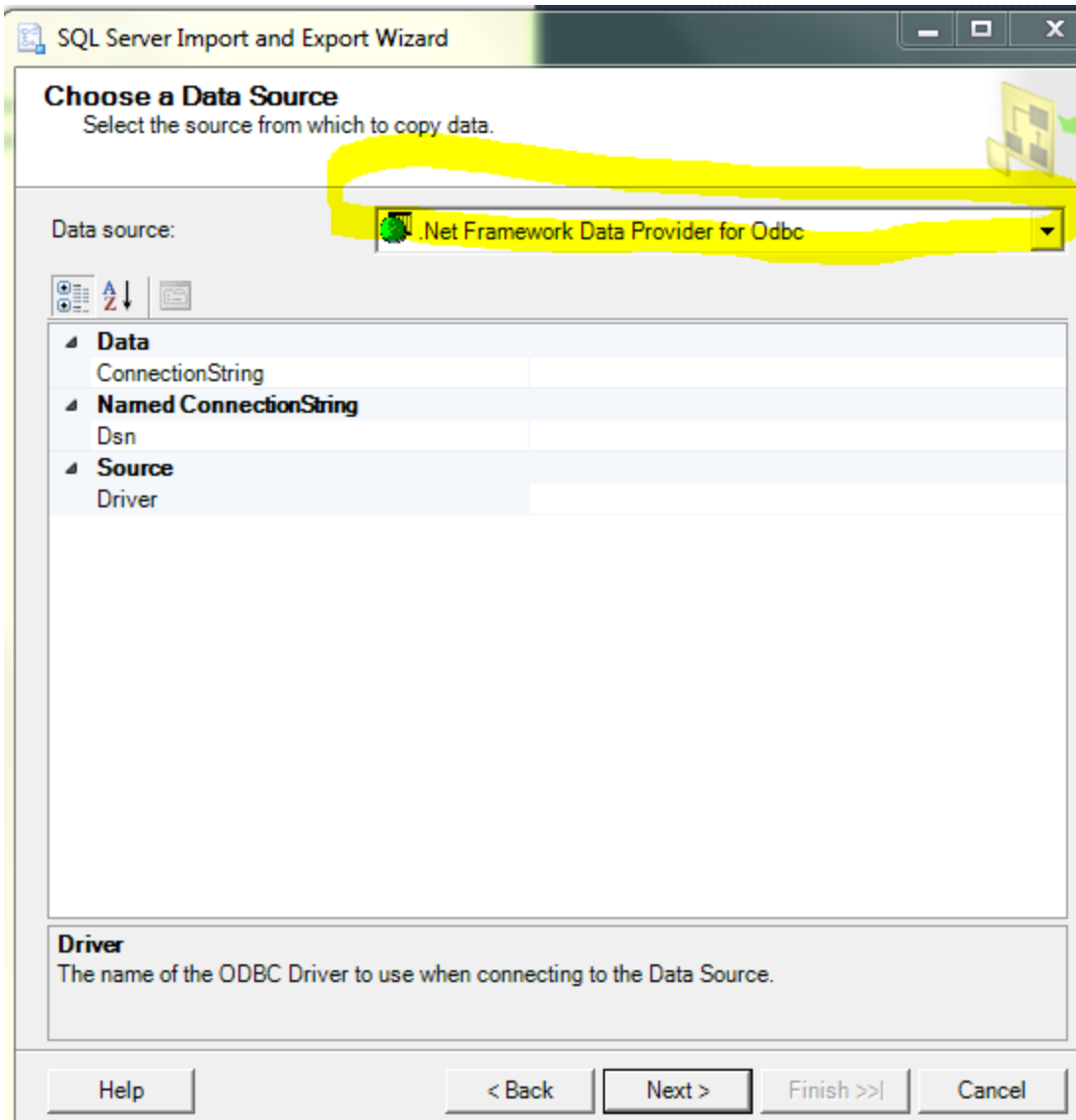
Go to the new database (HAP752), right click ->Tasks -> Import Data



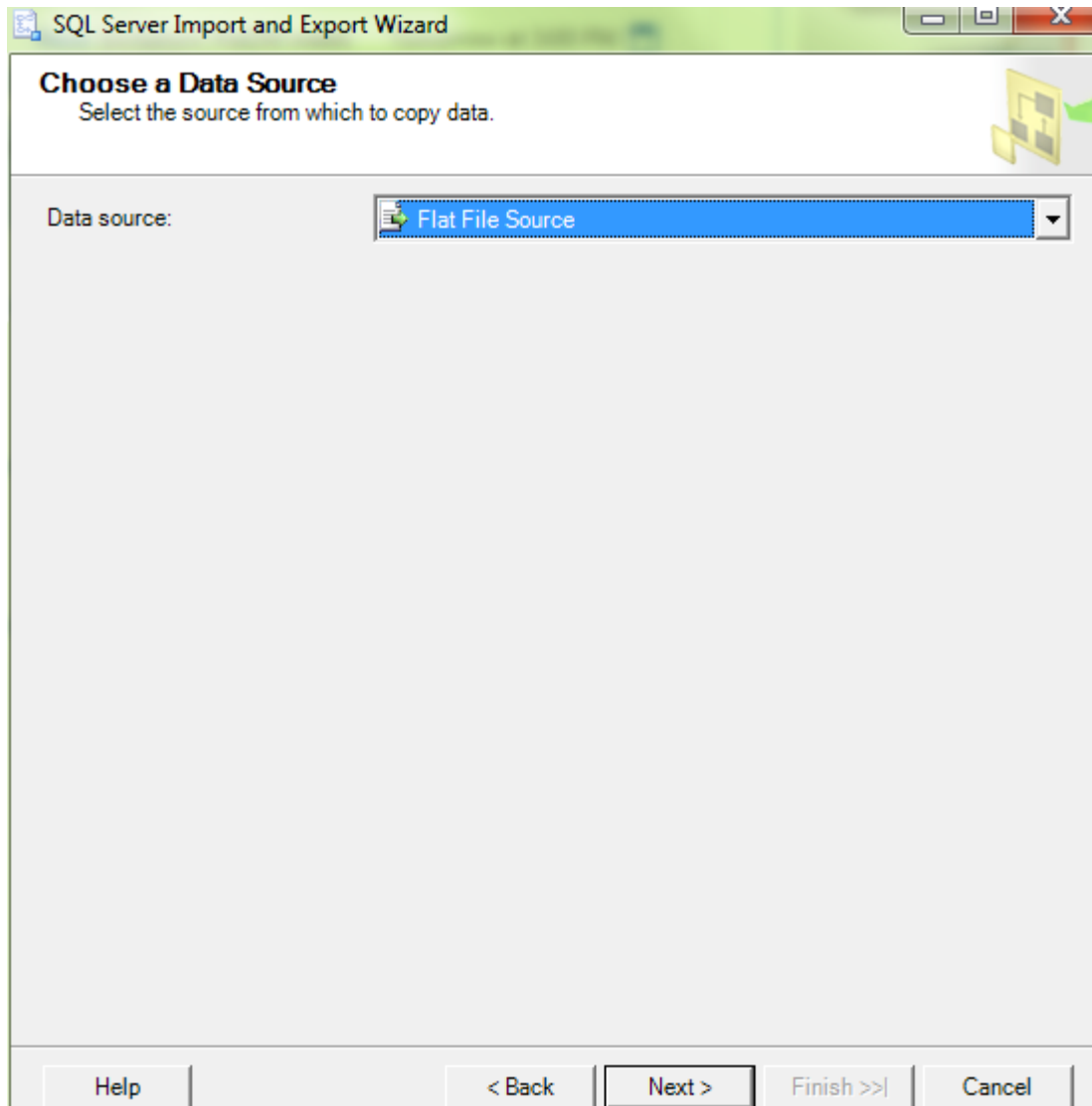
Use Wizard to import .csv files (one by one).

Click next.

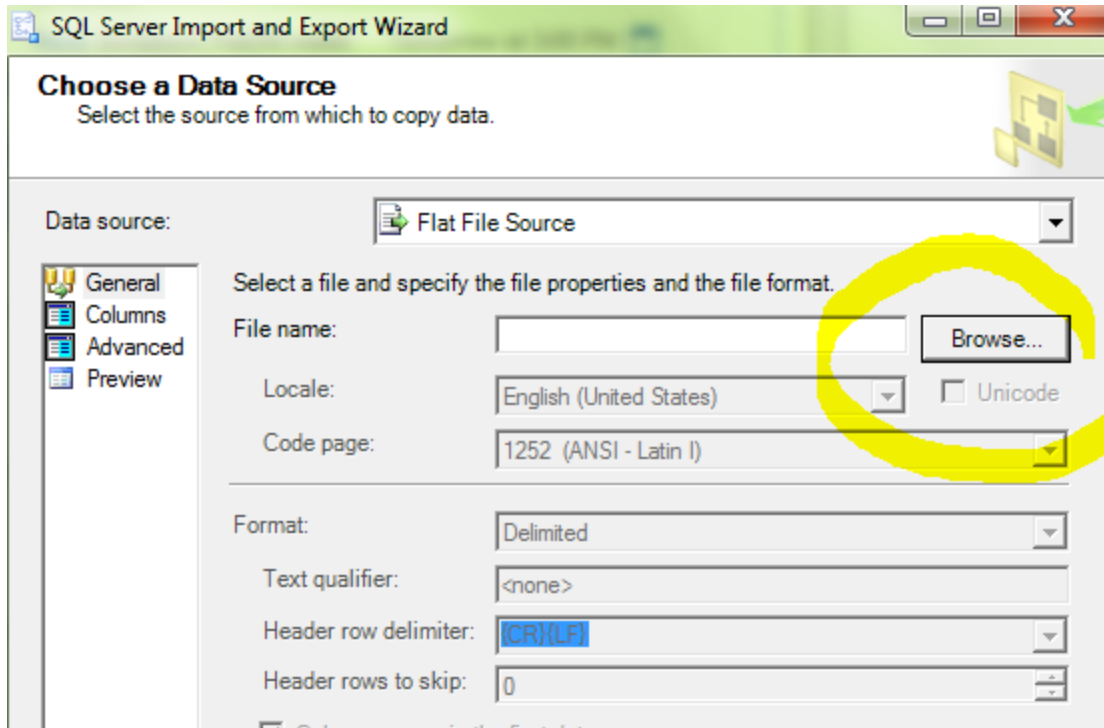
Choose a Data Source:



Choose Flat File Source:



Click Browse and find your unzipped file:



When you find the file (you have to do it one by one), click NEXT

Flat File Source

Select a file and specify the file properties and the file format.

File name: C:\Users\sanja\Downloads\ICD9Decriptio

Locale: English (United States) Unicode

Code page: 65001 (UTF-8)


Format: Delimited

Text qualifier: <none>

Header row delimiter: {CR}{LF}

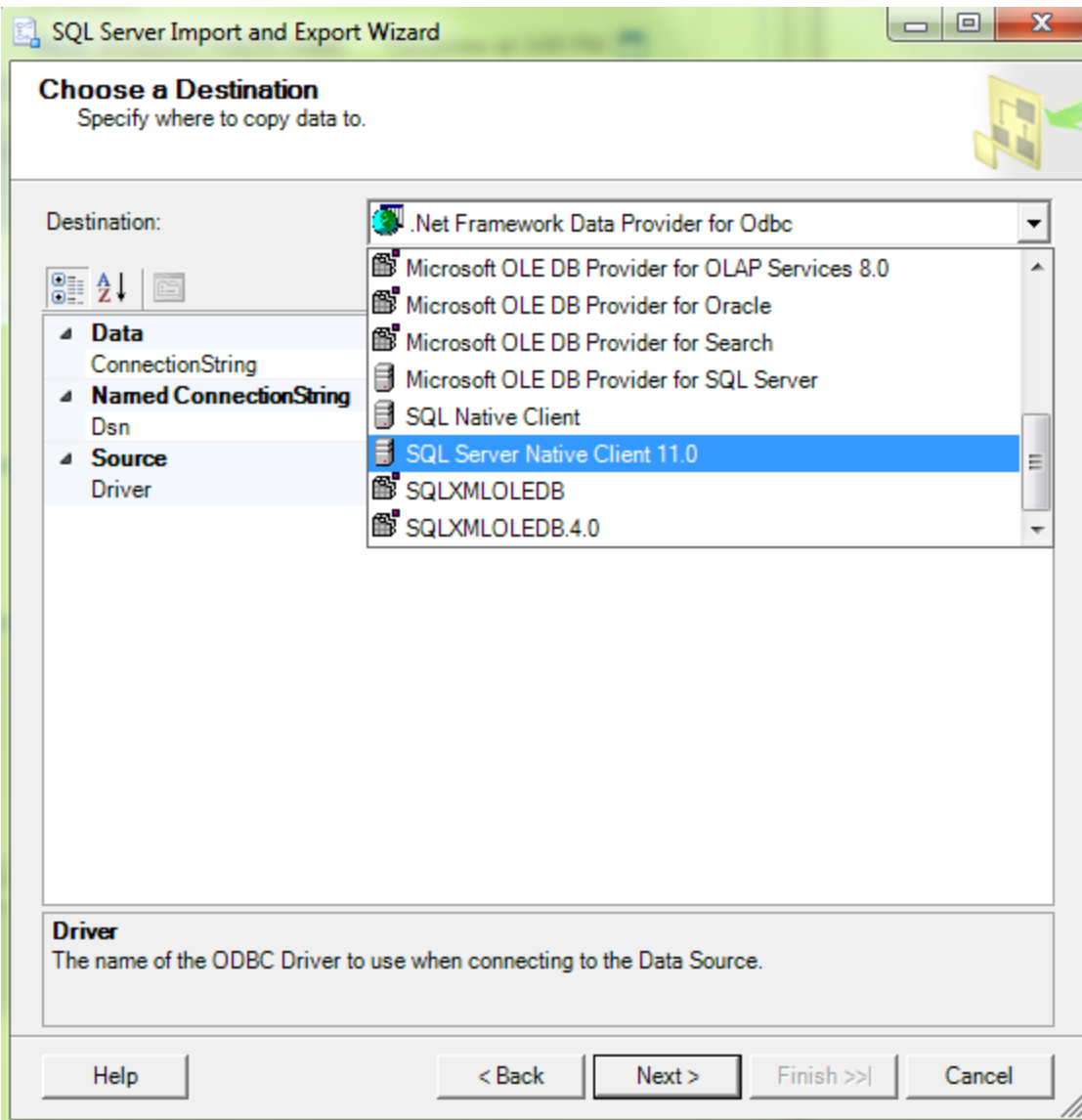
Header rows to skip: 0

Column names in the first data row

 Columns are not defined for this connection manager.

And Next again.

On the page "Choose a Destination" choose "Sql Server Native Client":



SQL Server Import and Export Wizard

Choose a Destination

Specify where to copy data to.

Destination:

Server name:

Authentication

Use Windows Authentication

Use SQL Server Authentication

User name:

Password:

Database:

Click NEXT.

"Select Source Tables and Views" -> Click Next:

Select Source Tables and Views

Choose one or more tables and views to copy.

Tables and views:

<input checked="" type="checkbox"/>	Source:	Destination: AVRAM-P
<input checked="" type="checkbox"/>	C:\Users\sanja\Downloads\ICD9Decripti...	[dbo].[ICD9Decripti

Save and Run Package

Indicate whether to save the SSIS package.



Run immediately

Save SSIS Package

SQL Server

File system

Package protection level:

Encrypt sensitive data with user key

Password:

Retype password:

Help

< Back

Next >

Finish >>|

Cancel